

Instruction Manual

Poppy Wireless Charger

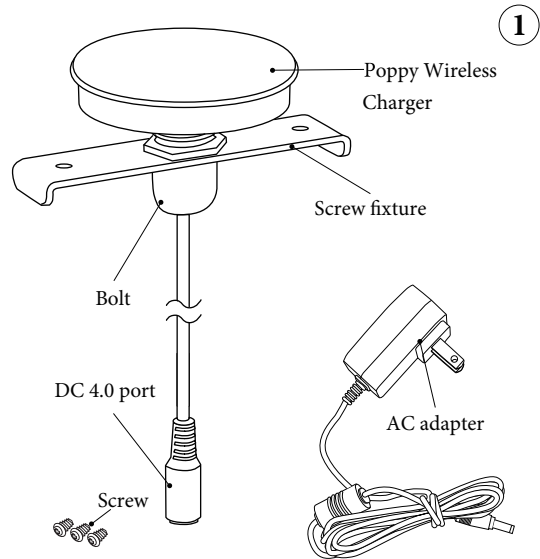
Model No.: POP-B-72

Package Contents:

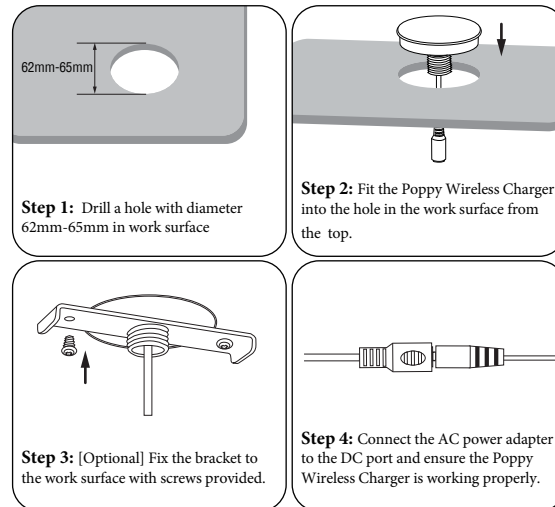
1. Poppy Wireless Charger x 1
2. User Manual x 1
3. Screw x 3
4. 9V 2A AC Adapter x 1



Size: 320x80mm
材质: 80克书纸
印刷: 黑色 (白底黑字) 单面印刷

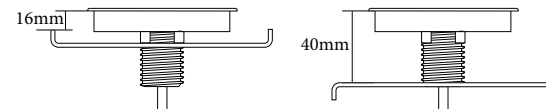


How to Install:



3

The bracket design enables you to secure the Poppy Wireless Charger to a range of work surface thicknesses. (16mm-40mm).



Specifications:

Poppy Wireless Charger:

Input: 9V 1.8A
Charging Mode: Samsung 10W
Fast Charge / iPhone 7.5W
Fast Charge / Qi 5W

AC Adapter:

Input: 100-240V 50-60Hz 0.8A
Output: 9V 2A

Caution:

1. The product can be charged only by the official power adapter, please do not make unauthorized changes to power supply unit.
2. Please do not attempt to disassemble this product, it may result in short-circuit or even damage.
3. The product should be kept in dry and ventilated environment, do not store it in an area of high humidity and high temperature.
4. Please do not use abrasive solvent to clean product surface.